



Sycon Maitri

By Sycon Construction

Location: Chikkabanahalli, Kadugodi Road, Whitefield



Scan Here
To get more details

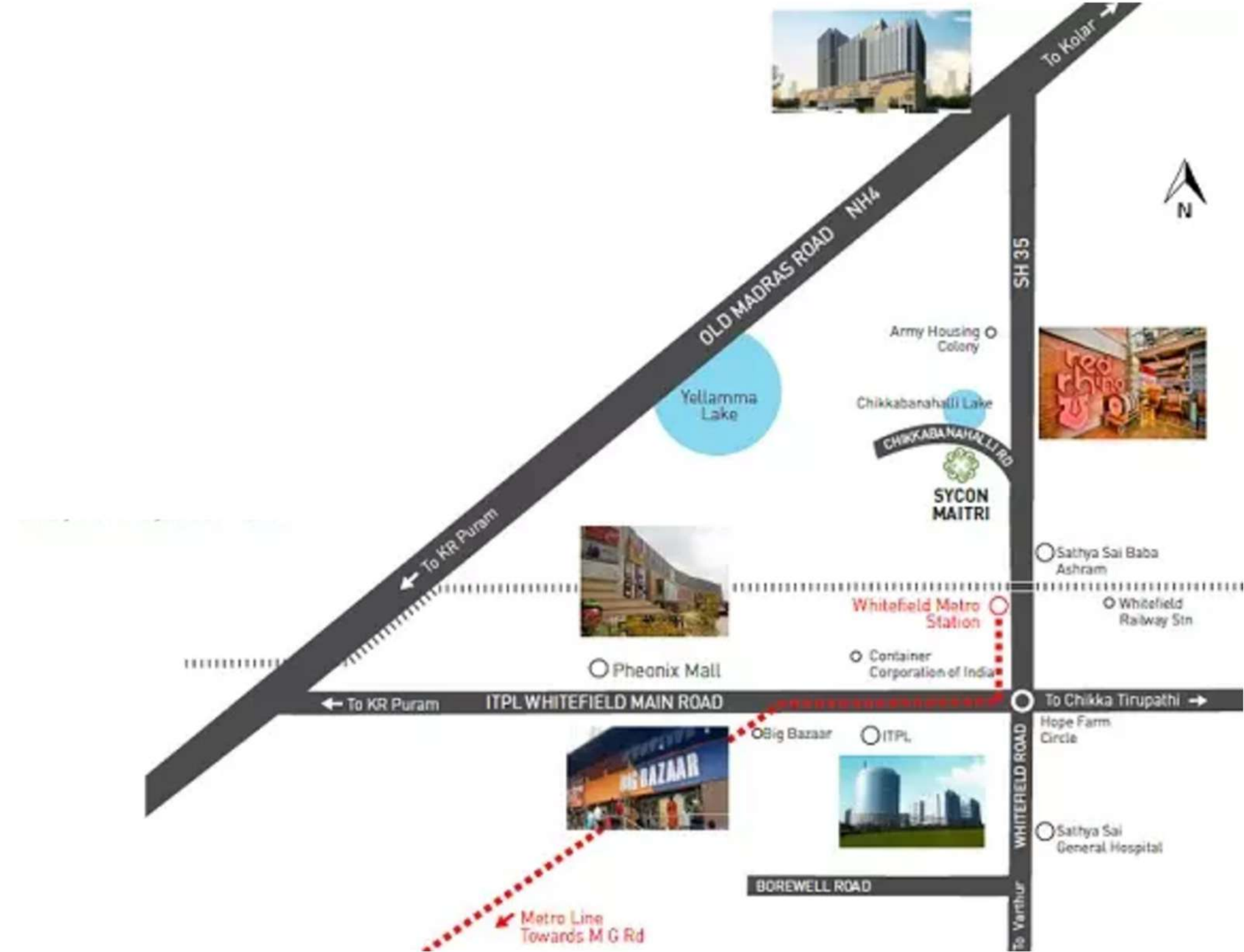
Location

Located just minutes from Whitefield's bustling business district, opposite to Chikkabannahalli Lake. Less than a 10-minute drive to National Highway 4 and ITPL. A 45-minute journey to the International Airport.

45 minutes away from **National Highway 4**

10 minutes from **International Airport**

Lavish Living Homes



About project

Sycon Maitri offers a blend of spaces designed to be both people-friendly and environmentally conscious. This neighborhood promotes an interactive, secure, and balanced living environment. With only 5 villas per acre and 73% open space, it stands apart from the congestion of city life.

Located in the fast-growing and highly sought-after Chikkanahalli area on Kadugodi Road, this ultra-luxury villa community spans 13 acres and consists of just 65 exclusive villas. With spacious plots, modern architecture, and premium amenities, this project is designed for those who want a peaceful, green living environment while being minutes away from Bangalore's top IT hubs. Each villa features private gardens, large bedrooms, walk-in closets, and luxurious bathrooms, with precast construction technology ensuring long-lasting durability with zero leakage issues.

A standout feature is the **25-acre natural lake right across the property**, ensuring a sustainable groundwater supply and enhancing the serene ambiance. A 2.5-acre botanical garden, children's play area, playground, and a dedicated senior citizens' park. 35,000 Sqft clubhouse is exclusively for 65 families, offering unmatched privacy and comfort.



Masterplan

Sycon Maitri is an ultra-luxury villa community spans 13 acres & consists of just 65 exclusive villas. With spacious plots, modern architecture, and premium amenities, designed for those who want a peaceful, green living environment while being minutes away from Bangalore's top IT hubs.

Less than a 10-minute drive to National Highway 4 and ITPL. A 45-minute journey to the International Airport, soon to be even faster with the proposed Peripheral Ring Road.

- Location: Chikkabanahalli, Kadugodi Road, Whitefield
- Total Area: 13 acres.
- Number of Villas: 65 exclusive villas.
- Villa Sizes: 3,658 sq.ft. to 6,150 sq.ft.
- Starting Price: ₹6.50 Cr onwards.
- Possession: Ready To Move



Villas at Sycon Maitri are exceptionally designed.

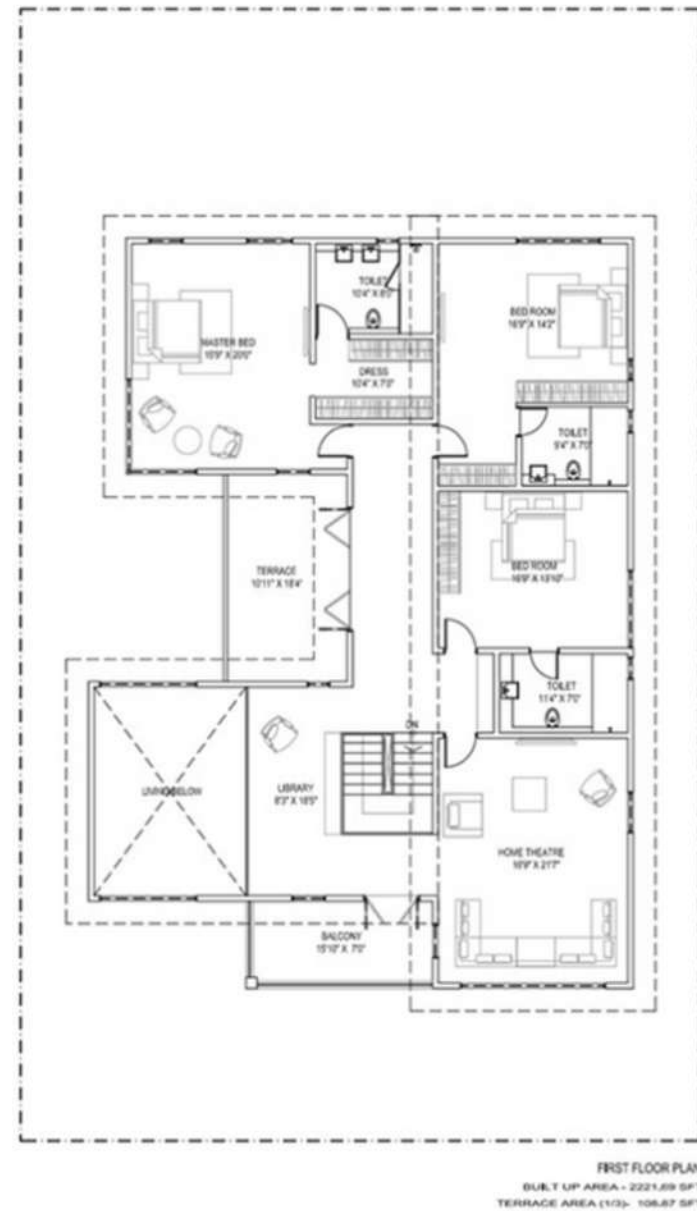
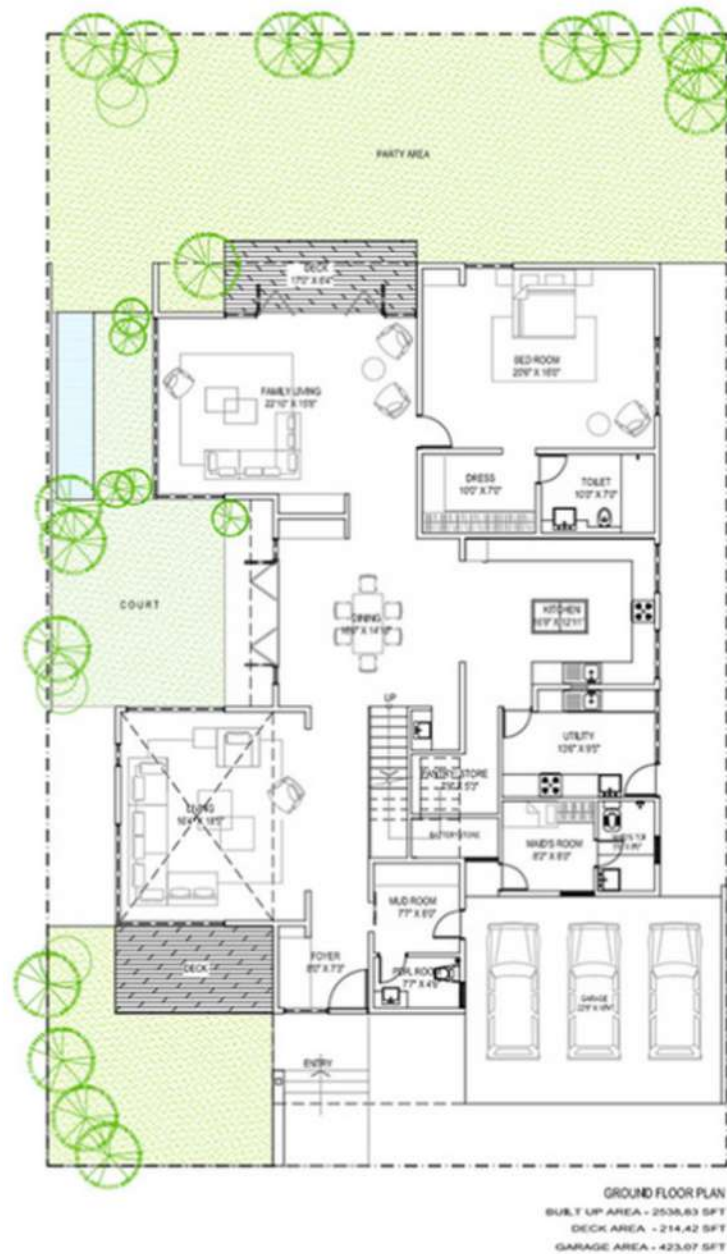
Sycon pioneered design and adoption of hybrid precast solutions using on-site / offsite production, pre and post tensioned elements. Precast concrete ensures desired strength and finish, dimensional stability and very low wastage

- Live an elevated lifestyle where you are at the highest element of the entire Plots along with enhanced privacy.
- All villas come with a walk-in closets, and large bathrooms, giving a truly luxurious feel.
- Each villa gets a minimum backyard of 600 Sqft.
- Serene Environment: Ideal for bird lovers and those who appreciate peace and privacy.



Type A

- Built Up : 6150 Sqft
- Plot Area : 6000 Sqft



Type C

- Built Up : 4247 Sqft
- Plot Area : 4400 Sqft





VILLA TYPE D GROUND FLOOR PLAN

VILLA TYPE D FIRST FLOOR PLAN



Type D

- Built Up : 3500 Sqft
- Plot Area : 3658 Sqft



Lavish Living Homes



Swimming Pool



Billiards



Party Lawn



Sauna



Yoga Deck



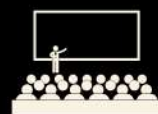
Indoor Games



Gymnasium



Guest Rooms



Multipurpose Room



Badminton Court



Amphitheater

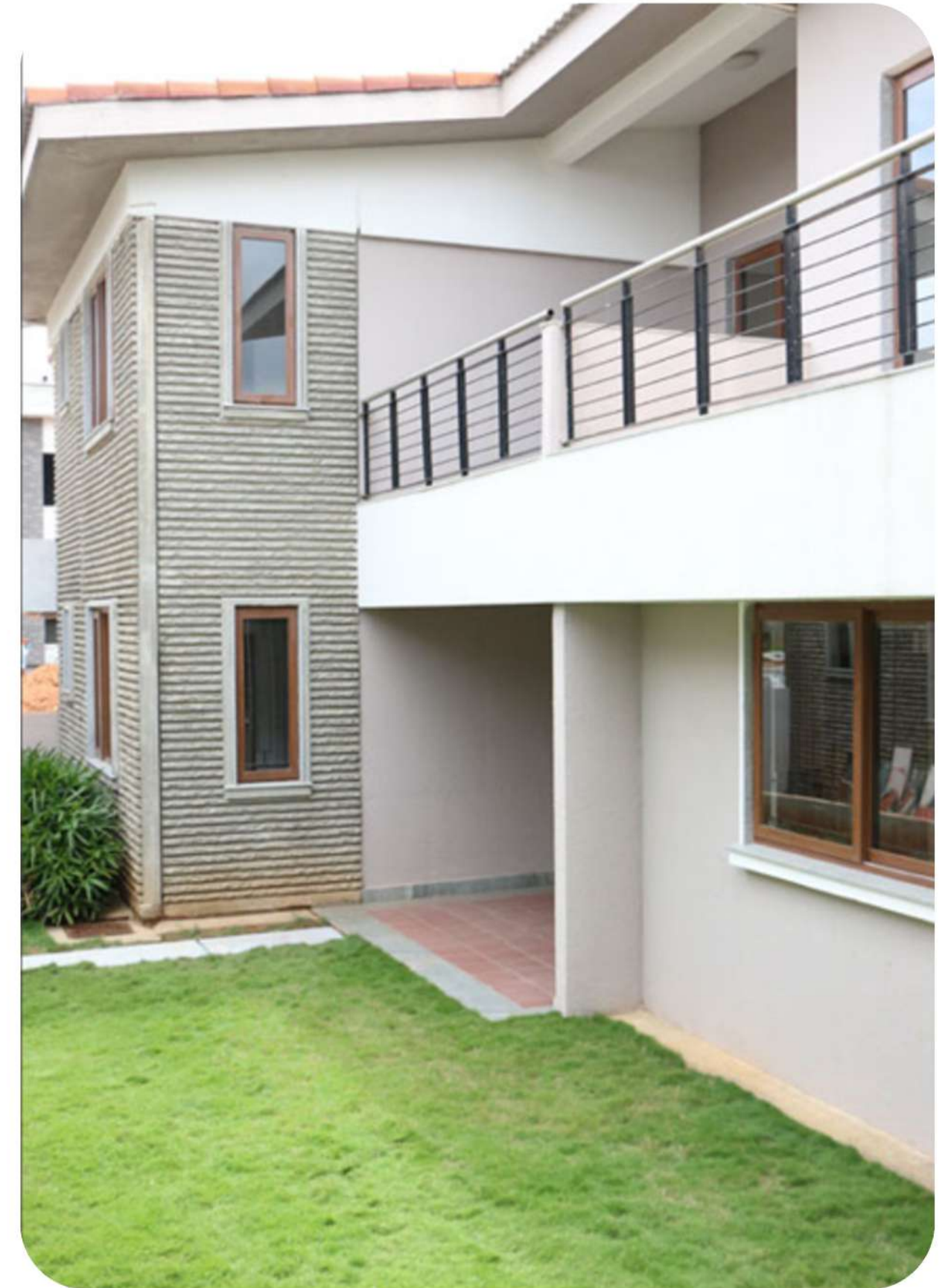


Lawn Tennis

Features

Sycon Maitri combines luxury, privacy, and sustainability in Bangalore's thriving Whitefield. Its low-density design, The serene lakefront setting, paired with 40+ amenities, creates a resort-like retreat. Backed by Sycon Constructions' 25+ projects and 75 years of team expertise, it's a trusted choice for lasting value.

- Superior Construction Quality: Built using advanced precast concrete technology
- Villas guarantee zero seepage, no leakage, and long-lasting durability. Precast ensures dimensional stability, low wastage, and architectural finesse.



Why choose this project?

01

BDA Approved Plot Registered Villas with Garden

Possession available from December 2024 for select units, villas are ready for immediate occupancy, ideal for families seeking no delays. RERA registered: PRM/KA/RERA/1251/446/PR/171222/000603.

02

High Investment Returns & Rental Yield

Whitefield's 8–10% YoY appreciation, driven by IT hubs and infrastructure like the upcoming metro, Larger plots and premium features add value compared to nearby projects.

03

Spacious & Thoughtfully Designed Homes

Villas feature modern elevations, ample natural light, excellent ventilation, and four-side-open plots for enhanced privacy. Interiors are crafted to suit evolving homeowner tastes, with stylish flooring and spacious layouts.

04

Vibrant Community Living

A self-contained enclave fosters a close-knit community of families, with sophisticated facilities promoting interaction and a balanced lifestyle.

About Lavish Living Homes

At Lavish Living Homes, we specialize in curating ultra-luxury residences for the discerning few. With a deep understanding of what luxury means, we handpick properties that embody sophistication, innovation, and exclusivity.

Our mission is to match you with a home that reflects your aspirations, offering personalized service every step of the way. We ensure every detail meets the highest standards. Trust us to deliver not just a house, but a legacy of lavish living.

At Lavish Living Homes, we understand that buying a luxury villa is not just a transaction; it's a significant life decision. Our mission is to redefine the luxury home-buying experience by offering unparalleled service and comprehensive information about each property.

Have questions?

12

Reach out to us for any inquiries on given details.



Phone Number
+91 91234 66308

Email
info@lavishliving.homes

website
lavishliving.homes